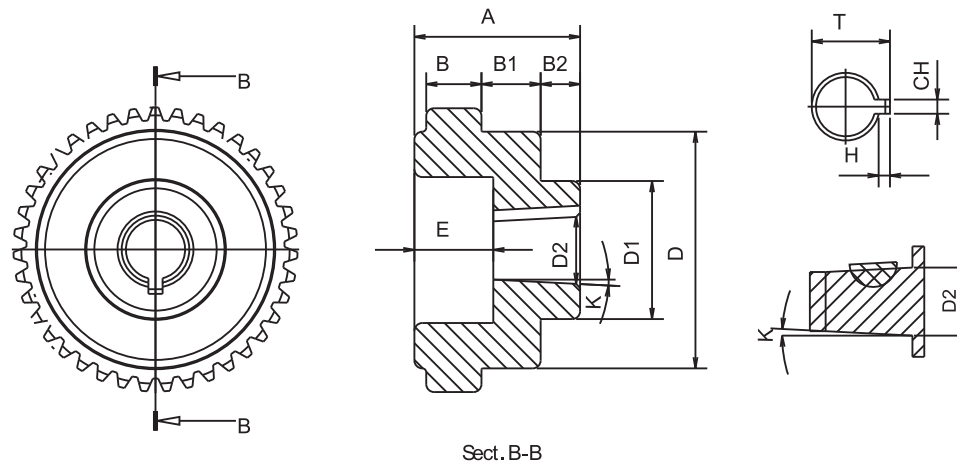


REFERENCE			MOTOR SIDE COUPLING GEAR							
KW.	HP	E.MOTOR	CODE	A	B	D	D2	CH	T	Z
5,5 / 7,5	7,5 / 10	132	DK3803	42 & 62	14	58				37
			DK381903				19	6	22	
			DK382403				24	8	28	
			DK382803				28	8	32	
			DK383203				32	8	36	
			DK383803				38	10	43	



PUMP SIDE COUPLING GEAR													
CODE	A	B	B1	B2	D	D1	D 2	E	CH	T	H	K	Z
DK381P03	42	14	15	10	58	35	16.66	20	4	-	2	1/8	37
DK382PD03			-	-		-	22.15	-	6.35	25,35	3,2	-	
DK382PK03			-	-		-	22.15	15	4	-	2	1/8	
DK383PK03			-	-		-	22.2	-	4	-	1.5	-	
DK383PD-1-03			-	-		-	29.21	-	8	33,21	4	-	
DK383PD-2-03			-	-		-	25,4	-	6	28,40	3	-	
DK383PD-3-03			-	-		-	31,75	-	8	35,75	4	-	
DK38-G2B-03			-	-		-	12.5	-	3	-	1,5	1/5	
DK38-1M03			-	-		-	13.9	-	3	-	1,5	1/8	
DK38-G2-1403			-	-		-	14.3	-	4	-	2		
DK38-2-03			-	-		-	17.2	-	4	-	2		
DK38-2-03T			-	-		-	17.2	-	3.2	-	1,6		
DK38-G3-03			-	-		-	18.36	-	4	-	2	1/5	
DK38-G3B-03			-	-		-	19.3	-	5	-	2,5		
DK38-SAE-A-03			-	-		-	19.05	-	5	21,55	2,5	-	
DK38-G3,5-03			-	-		-	21.08	-	5	-	2,5	1/8	
DK38-ZG-03			-	-		-	25.2	-	5	-	2,5	1/5	
DK38-35-03T			-	-		-	25.6	-	4.76	-	2,4	1/8	
DK38-35-03			-	-		-	25.6	-	5	-	2,5		
DK38-4-03T			-	-		-	33.3	-	6.35	-	3,2		
DK38-4-03	-	-	-	33.3	-	7	-	3,5					